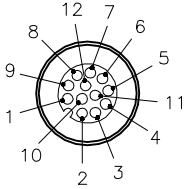
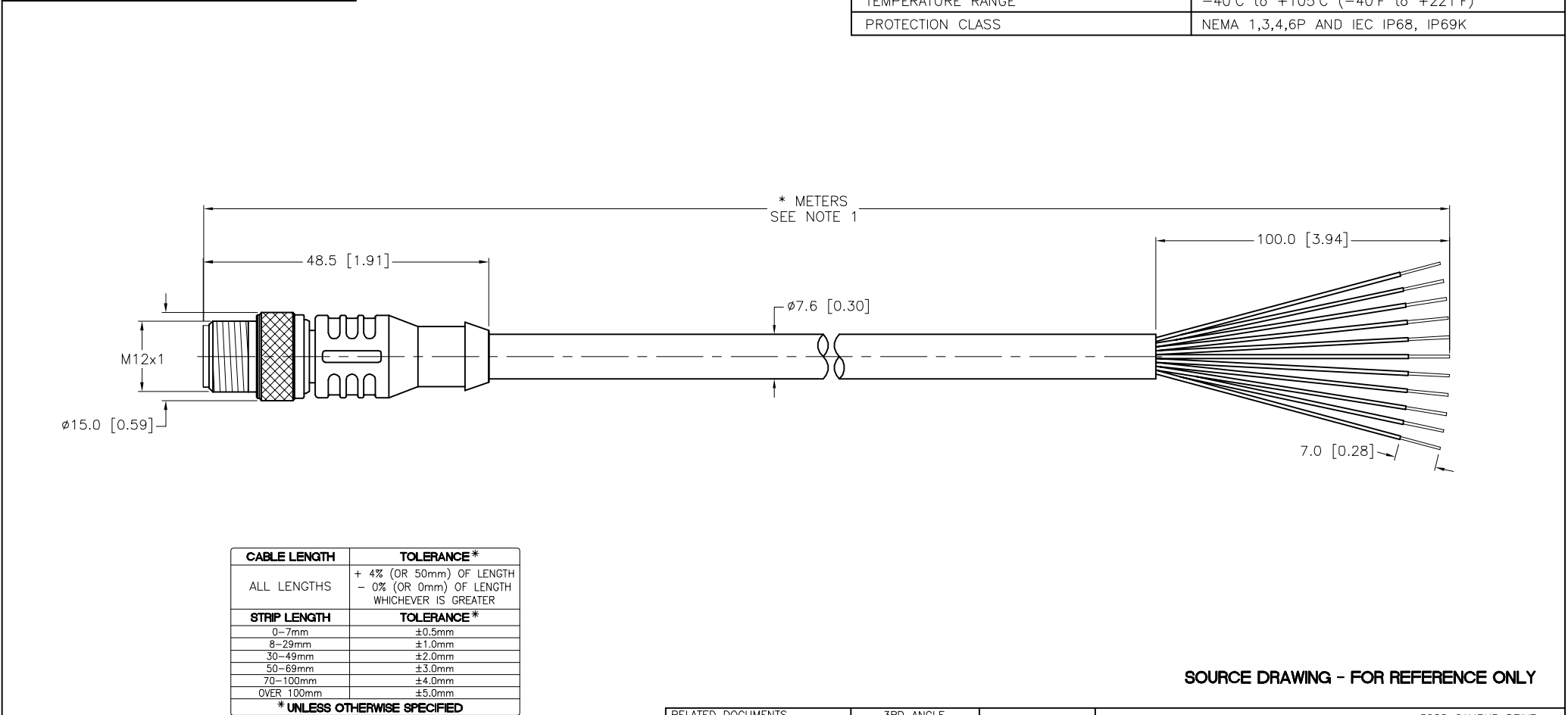


MALE END VIEW		SPECIFICATIONS	
	1 = WHITE	CONTACT CARRIER MATERIAL	TPU
	2 = BROWN	MOLDED HEAD MATERIAL/COLOR	TPU/YELLOW
	3 = GREEN	CONTACT MATERIAL/PLATING	BRASS/GOLD
	4 = YELLOW	COUPLING NUT MATERIAL/PLATING	BRASS/NICKEL
	5 = GREY	RATED CURRENT [A]	2.0 A
	6 = PINK	RATED VOLTAGE [V]	30 V
	7 = BLUE	OUTER CABLE JACKET MATERIAL/COLOR	TPE/BLACK
	8 = RED	CONDUCTOR INSULATION MATERIAL	POLYESTER ELASTOMER
	9 = ORANGE	NUMBER OF CONDUCTORS [AWG]	12x24 AWG
	10 = TAN	TEMPERATURE RANGE	-40°C to +105°C (-40°F to +221°F)
	11 = BLACK	PROTECTION CLASS	NEMA 1,3,4,6P AND IEC IP68, IP69K
	12 = VIOLET		



NOTES:

1. "\*" DESIGNATES CABLE LENGTH IN METERS. CONTACT TURCK TO ORDER SPECIFIC LENGTHS.
2. "/S101" DESIGNATES FLEXLIFE-20 AND C-TRACK CABLE.

I	UPDATE VOLTAGE RATING	CBM	02/21/23	78300	SEE SPECIFICATIONS	FOR MORE INFORMATION	DO NOT SCALE THIS DRAWING		I
REV	DESCRIPTION	BY	DATE	ECO NO.				FILE: 777002551	SHEET 1 OF 1